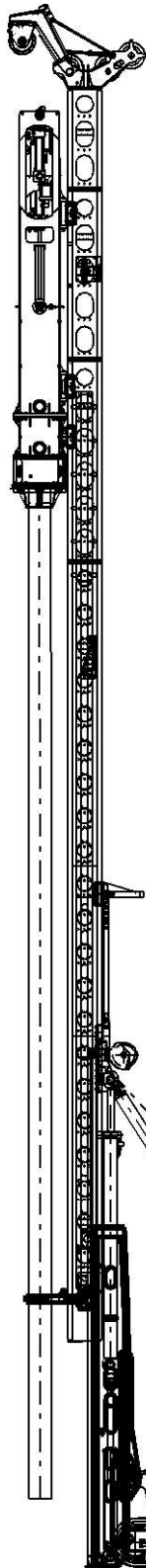


B1 TECHNICAL SPECIFICATION

1 INTRODUCTION

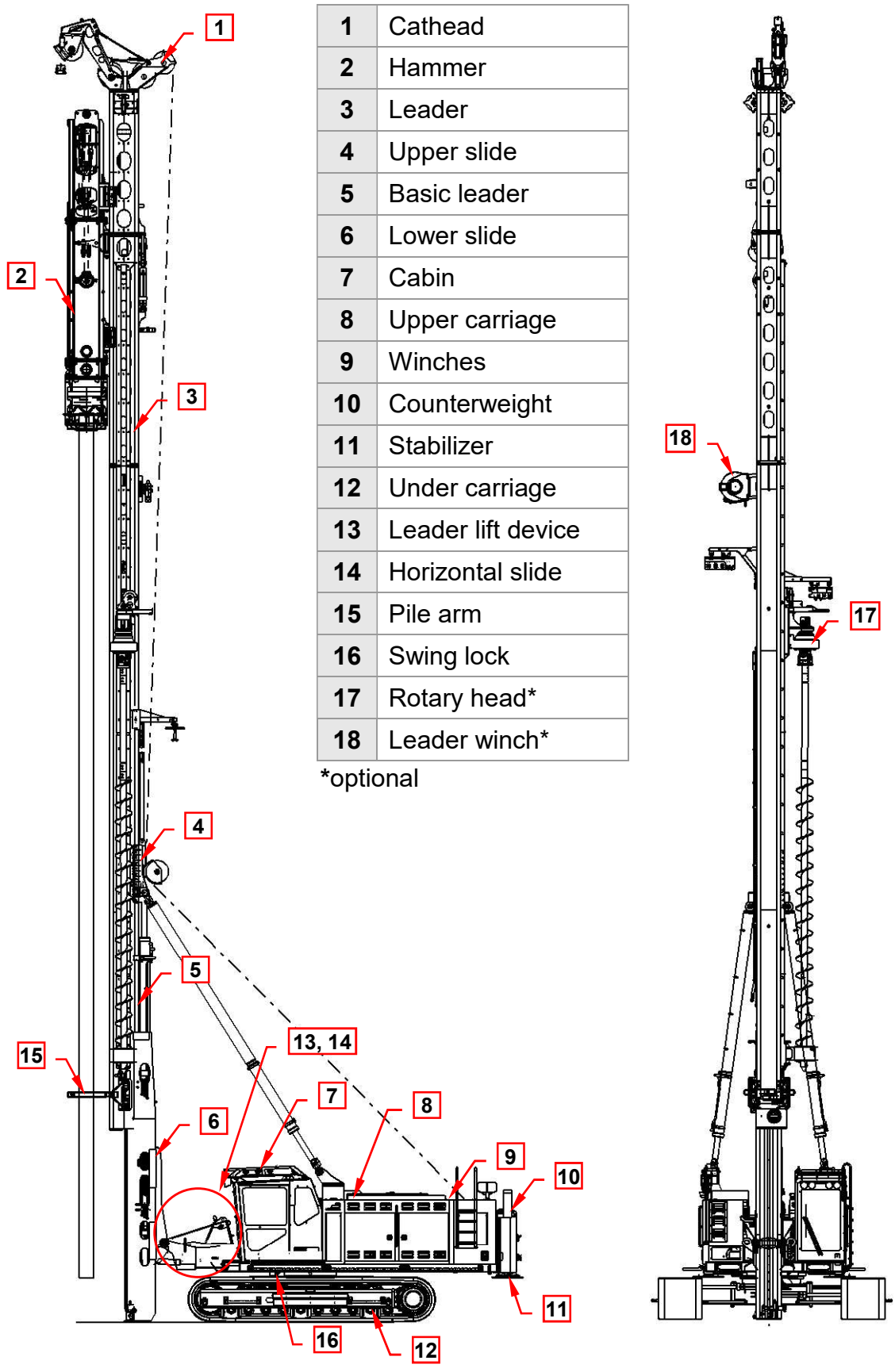


The Junttan PM25LC piling rig is designed for pile driving with the 5/7/9A hammer. The maximum pile length is 19 m. The construction of the machine is a rotating machinery deck with a leader on a crawler-mounted undercarriage. The piling leader consists of a basic leader, leader, and one or more optional leader extension(s). The bottom of the leader is connected with the cross joint to the horizontal slide. These enable the vertical and horizontal positioning of the leader. The lateral inclination cylinders and the forward/backward inclination cylinder control the inclination of the leader through the upper slide. The leader slides axially in relation to the basic leader.

There are two winches at the rear of the machinery deck. The winch on the right is the hammer winch and the left one is the pile winch. The ropes of the winches run through sheaves in the upper slide and cathead to the front of the leader. The third winch is for rotary head.

The leader lift device erects and lowers the leader from and to the transport position. There is also a counterweight in the upper carriage.

2 MAJOR COMPONENTS



3 WEIGHT

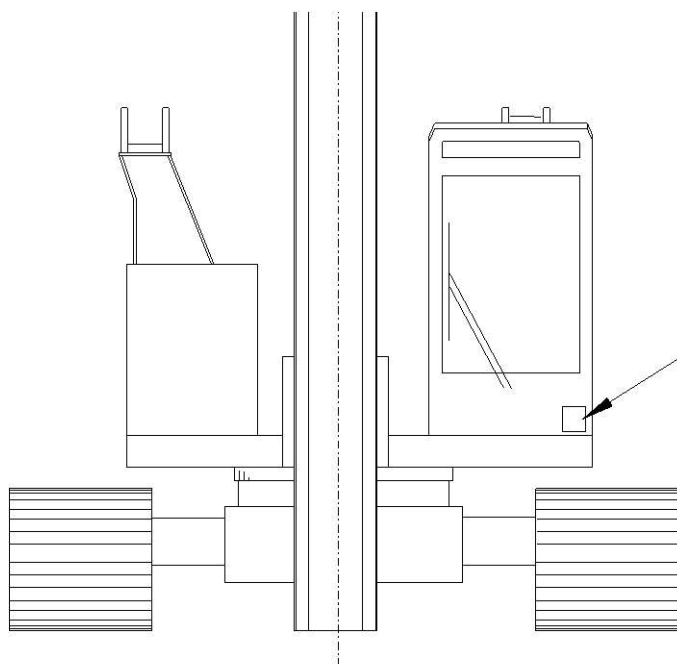
3.1 WORK WEIGHT

TRAVEL LEVER

Base machine with leader (net including full fuel and oil tanks, etc.):	53 100 kg
Counterweight:	8 000 kg
Hammer HHK5A:	9 200 kg
Hammer HHK7A:	11 900 kg
Hammer HHK9A:	14 400 kg
Total weight with HHK5A:	70 300 kg
Total weight with HHK7A:	73 000 kg
Total weight with HHK9A:	75 500 kg

3.2 TRANSPORT WEIGHT

Total weight with HHK5A:	70 300 kg
Total weight with HHK7A:	73 000 kg
Total weight with HHK9A:	75 500 kg



Location of the product identification number

4 DIMENSIONS

4.1 GENERAL DIMENSIONS

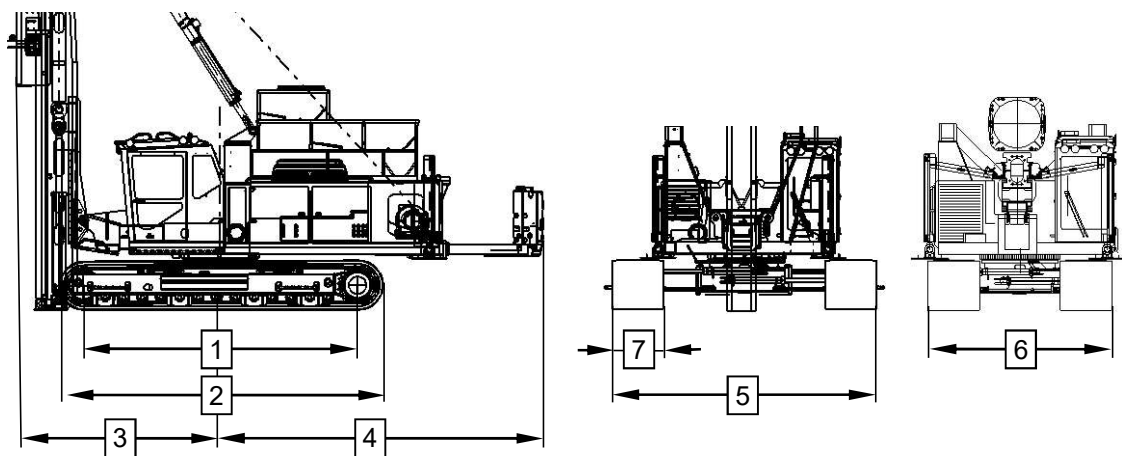
Maximum height:	27 670 mm
Maximum width in working:	4 700 mm
Maximum length:	10 800 mm
Maximum pile length (with HHK5A):	19 000 mm

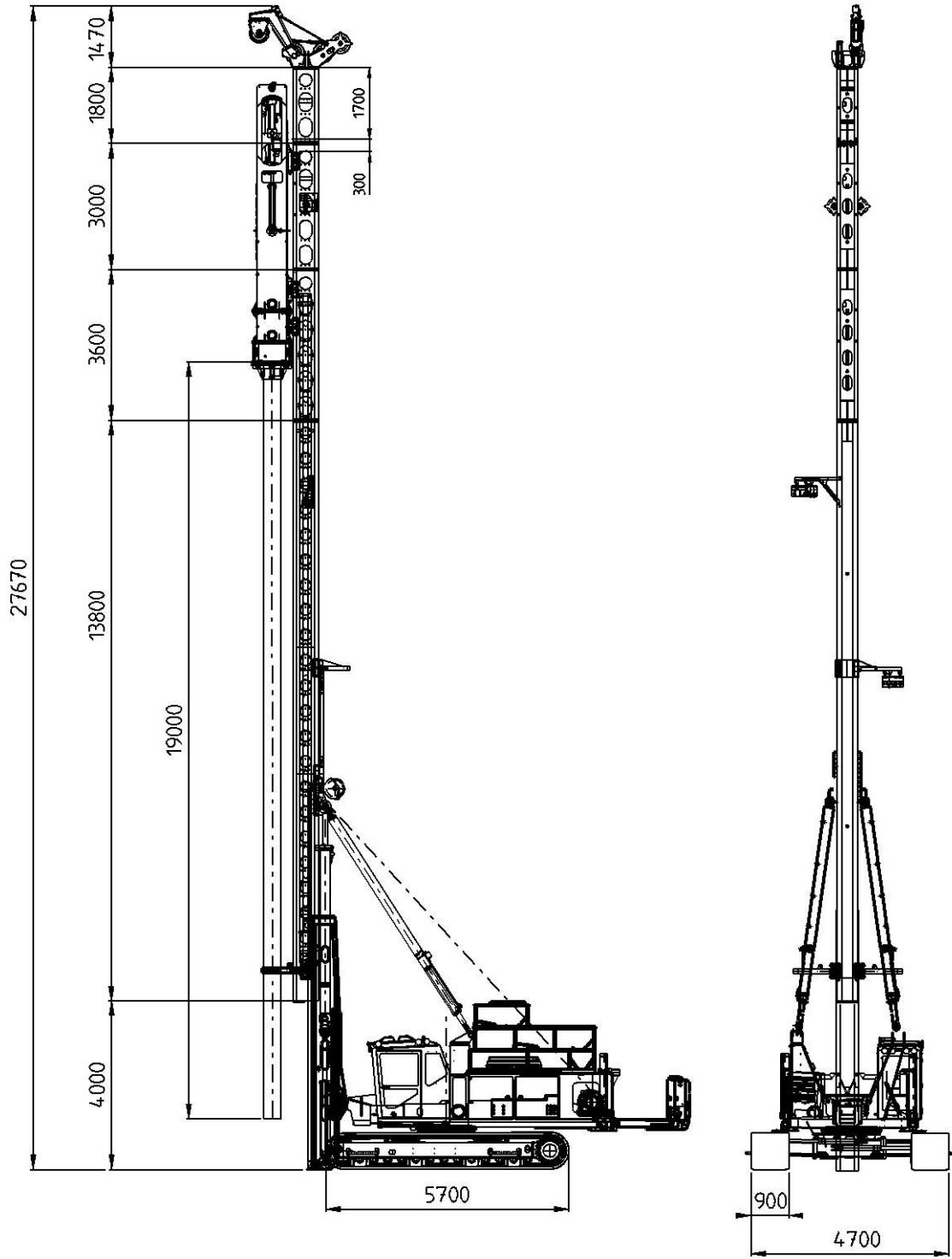
4.2 TRANSPORT DIMENSIONS

Length:	24 100 mm
Width:	3 370 mm
Height:	3 300 mm
Height (with HHK5/7/9A):	3 760 mm

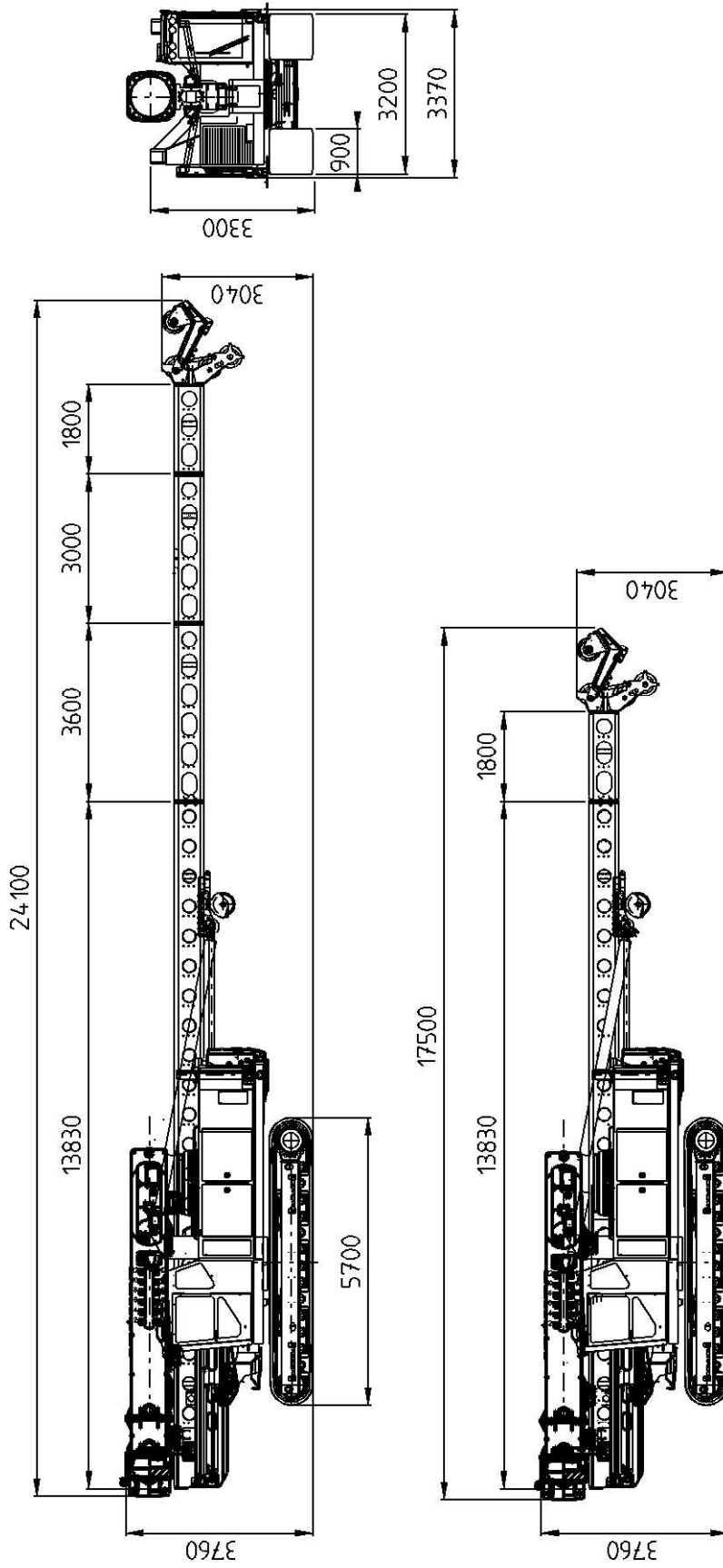
4.3 UNDERCARRIAGE

		Dimension, mm
1	Sprocket axis-idler axis	4 900
2	Crawler base	5 700
3	Center-front	3 600...5 100
4	Center-back	4 200...5 700
5	Width in working position	4 700
6	Width in transport position	3 370
7	Track shoes	900





General dimensions



Transport dimensions